



DIAMOND SINKS



STAINLESS STEEL SINKS

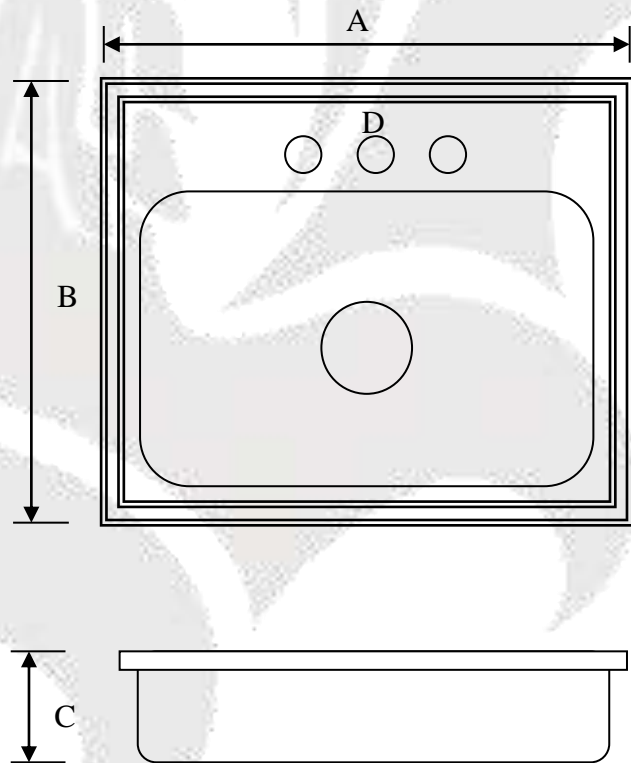


Features:

- Exposed surfaces are polished to a lustrous, highlighted bright satin finish.
- **IT'S HYGIENIC.** When hygiene counts, stainless is the metal of choice. Many hospitals and other sterile environments prefer stainless. Stainless is the preference for the food preparation industry, restaurants and kitchens.

The Sound Guard Undercoating covers the bottom of the bowls to eliminate noise and vibration.

A	B	C Depth	D Holes
15"	15"	6"	2
15"	15"	6"	3
15"	15"	8"	3
22"	17"	6"	3
25"	22"	6"	3
25"	22"	6"	4
25"	22"	8"	3
25"	22"	8"	4
33"	22"	6"	3
33"	22"	6"	4
33"	22"	8"	3
33"	22"	8"	4



* Faucets are sold separately

LEO INTERNATIONAL, INC.

471 Sutter Avenue, Brooklyn, New York 11207 • Tel:718-290-8005 • Fax:718-290-8046

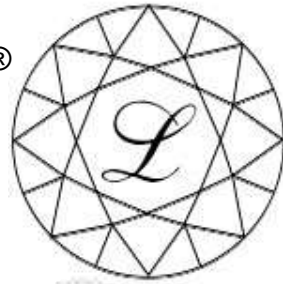
www.leointernational.com



DIAMOND SINKS™

STAINLESS STEEL UNDERMOUNT SINK

KINGSMAN®



- Single Bowl
- Size **23.5" X 21" X 9"**
- 9" Deep
- 18Gauge Stainless Steel
- Mirror rim / Luster bowl finish
- Fits 30" Cabinet

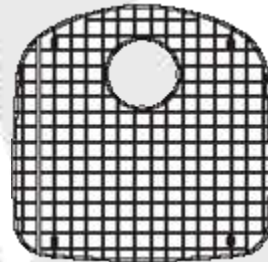
Part #SNK235219



Also Available:

BOTTOM GRID

Part #SNKBGD



42" STAINLESS STEEL SINK TOPS



← Left Hand

Right Hand →



LEO INTERNATIONAL, INC.

471 Sutter Avenue, Brooklyn, New York 11207 • Tel:718-290-8005 • Fax:718-290-8046

www.leointernational.com



UNDERMOUNT SERIES



HUGO™



Part # SNKU3151810
Size: 31.5" x 18" x 10"

BAILEY™



Part # SNKU23178
Size: 23" x 17" x 8"

BALBOA™ DOUBLE BOWL (Same Size)



Part # SNKU325188
Size: 32.5" x 18" x 8"

FRANKEL™ DOUBLE BOWL (Big & Small)



Part # SNKU321887BS
Size: 32" x 18" x 8"

Stainless Steel Duo Strainer



Part #DSC

Stainless Steel Cup Style Duo Strainer



Part #DSCC

Cast Brass Excellent Duo Strainer



Part #DSCXL

Stainless Steel Flat Strainer

Part #DSCS



Stainless Steel Mesh Strainer

Part #MSM....2 3/8" (Medium)
MSL....4 5/8" (Large)



LEO INTERNATIONAL, INC.

471 Sutter Avenue, Brooklyn, New York 11207 • Tel:718-290-8005 • Fax:718-290-8046

www.leointernational.com